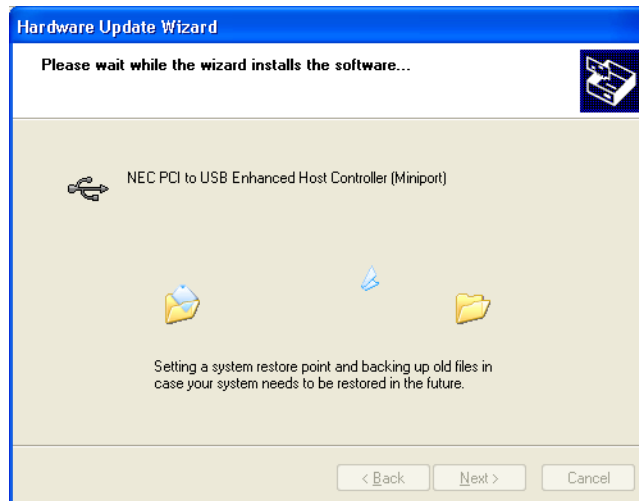


Installing Windows XP Drivers for the Lava USB 2.0 Host Adapter

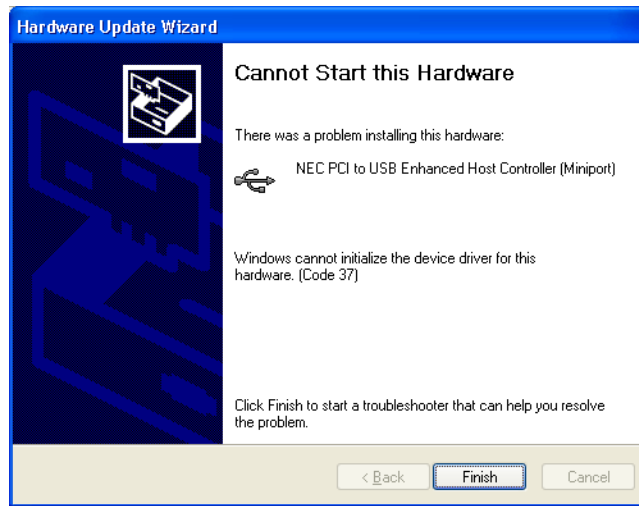
1. When the system is started with the USB 2.0 Host Adapter installed, Windows XP will detect the new hardware and display the following screen:



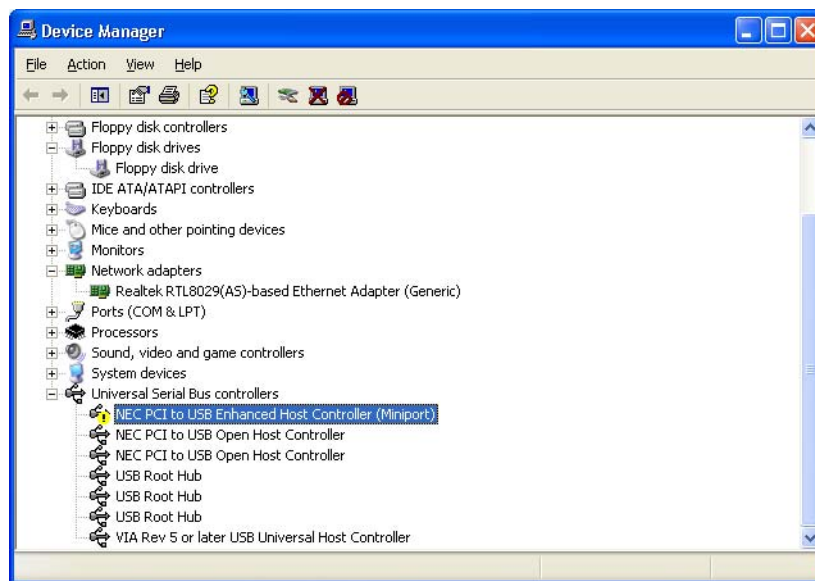
2. Choosing to install the hardware will cause Windows XP to install whatever drivers it can locate.



- When finished, Windows XP will display a message about a missing driver.



- Looking in Windows Device Manager indicates the specific driver that has been detected as missing:



- At this point, open your web browser and navigate to the Microsoft Windows Update site (<http://www.windowsupdate.com>). You will need to do this with the USB 2.0 host adapter installed in your system and with Windows XP as your currently running operating system, as Windows Update will automatically proceed to install the new drivers later in the process.

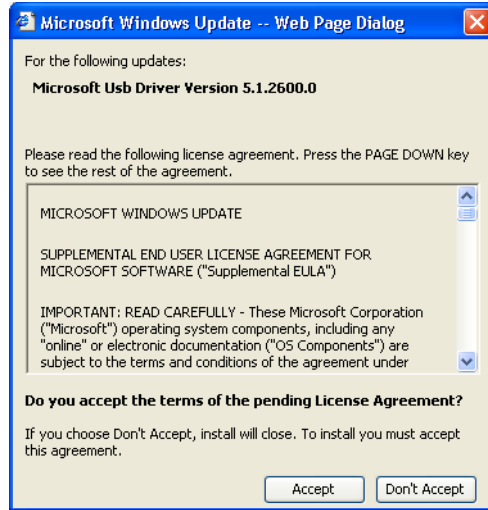
6. Before you can download anything, Windows update will ask permission to install its Windows Update Control, software that will detect what updates you might need.



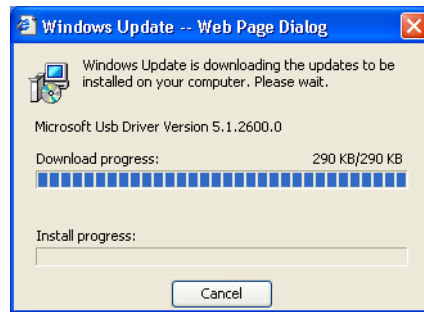
7. The specific update you need for the USB 2.0 Host Adapter is the Microsoft USB Driver (Version 5.1.2600.0 is shown in the screen capture below).



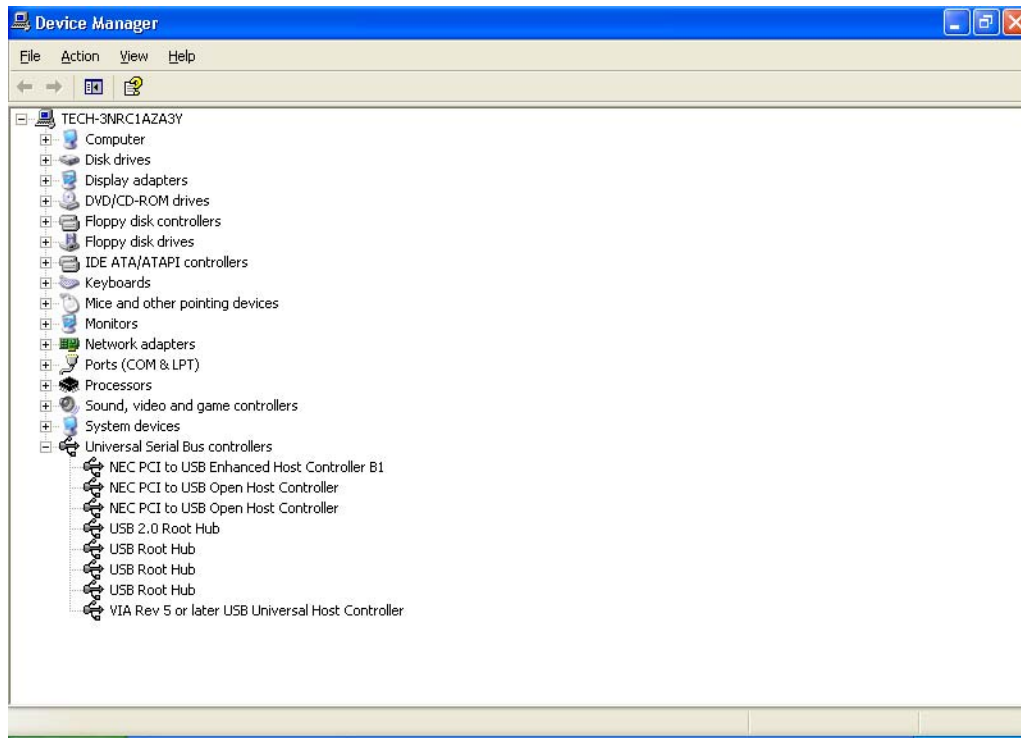
8. The installation routine will next ask you to accept a licensing agreement.



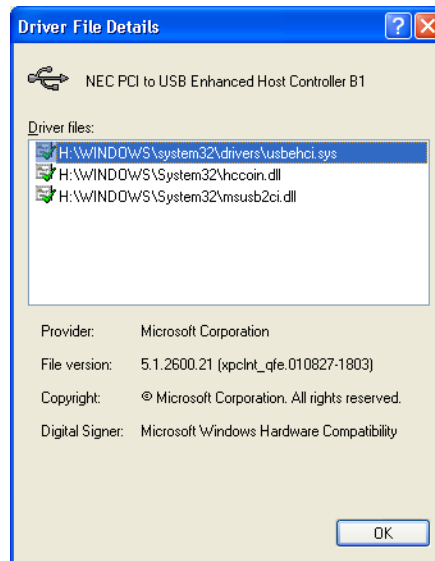
9. After accepting the terms of the license, the download will begin. Once Microsoft Update has finished, it will automatically install the drivers on your system.



10. After the installation is complete, you will be able to see the “NEC PCI to USB Enhanced Host Controller B1” in the Windows Device Manager.



11. For reference, right-clicking on the “NEC PCI to USB Enhanced Host Controller B1” entry in the Device manager will allow you to inspect the names of the installed drivers as shown below.



Lava Technical Support
18 April 2002