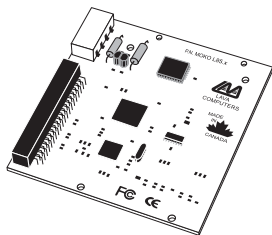


IEEE 1394-IDE Drive Interface Controller Installation Manual



Rev. B00

Congratulations on your purchase of the Lava IEEE 1394-to-IDE Interface Controller. This drive controller is an IEEE 1394 IDE hard drive controller for Macintosh and PC systems. The interface controller converts IDE drives to IEEE 1394 / FireWire® drives.

By installing the interface controller into your system, you will:

Make any 7200 RPM IDE drive DV compatible.

Achieve FireWire® drive data throughput rates.

Hot-swap and daisy-chain up to 64 drives.

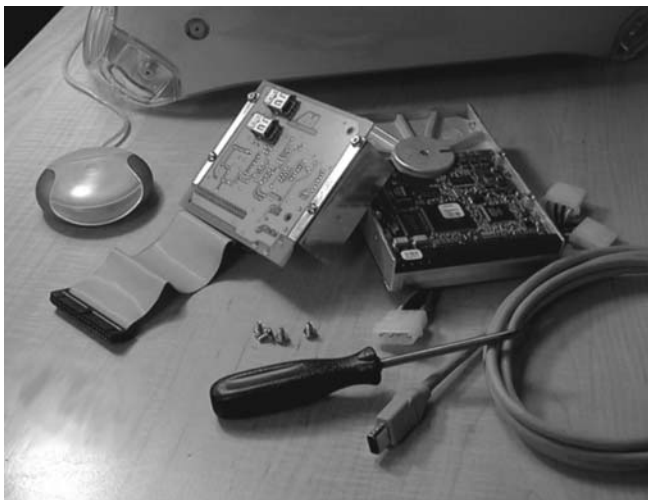
Included with your package, you should have the following:

1. Lava IEEE 1394-to-IDE Interface Controller.
2. IEEE 1394 cable, IDE cable, power cable.
3. Mounting brackets and screws.
4. Installation manual.

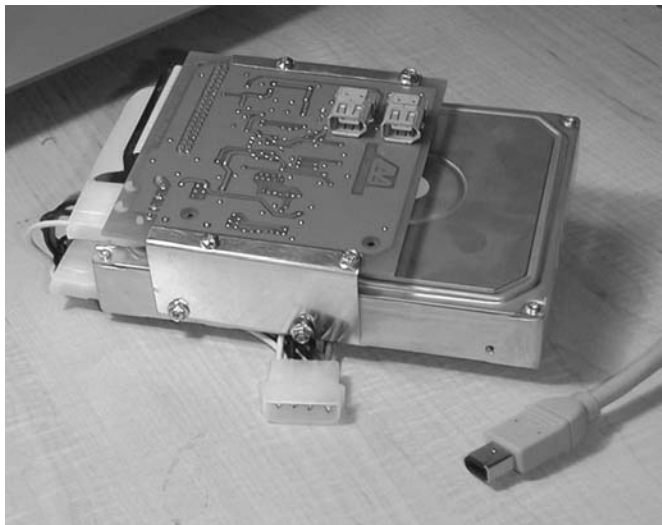
If any of the above items is missing, please contact the reseller where you purchased this product.

The Lava IEEE 1394-IDE drive controller ships complete with all cables, brackets, and screws. (IDE hard drive purchased separately).

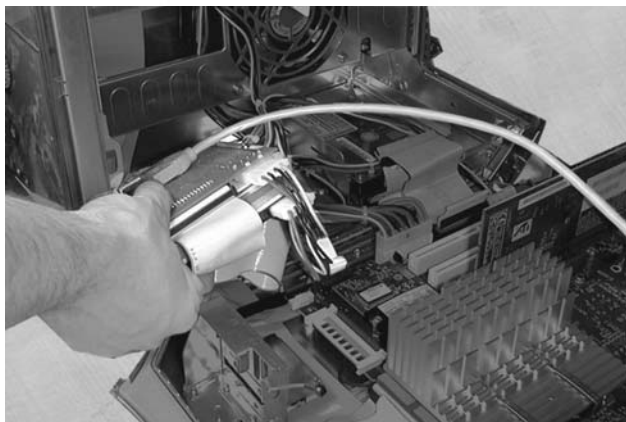
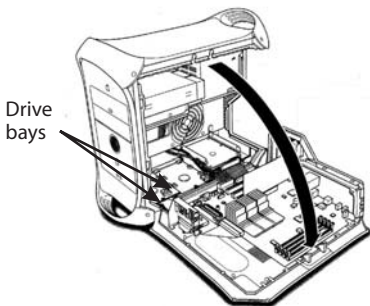
Note: 7200 RPM drives are recommended for maximum throughput.



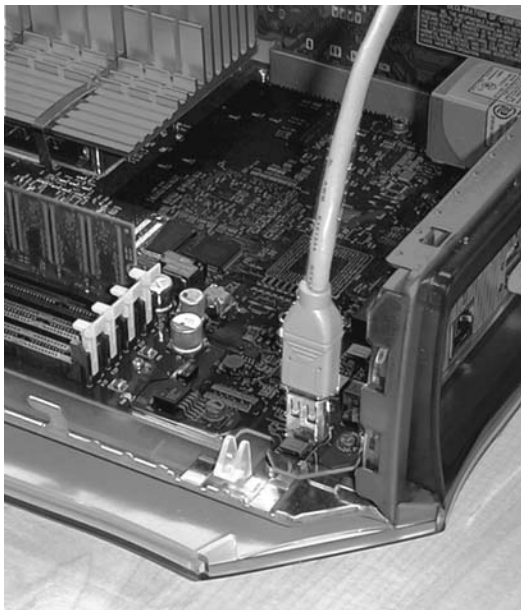
Attach the Lava IEEE 1394-IDE drive controller to your IDE hard drive with the four screws included in the kit.



Slide the assembled unit into a drive expansion bay in your computer's chassis (Macintosh® G4 shown as an example).



Attach the supplied IEEE 1394 cable to an internal FireWire® port in your system.



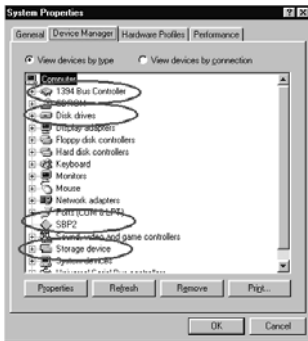
Windows® Installation

When Windows asks you to, specify the location of the device drivers on the Windows Installation CD, then Hit OK. Windows will install drivers for a 1394 storage device (SBP2 serial bus protocol 2).

To check that your interface controller is configured in Windows, you should see the following entries in Windows Device Manager.

Under the entry "Disk Drives" in Windows 98SE and Windows ME, the controller will appear as the make and model of the hard drive you have attached to the controller.

In Windows 2000/XP the controller will appear as on the right.



Lava Technical Support

9:00 am to 5:30 pm Monday to Friday (Eastern Time)

Tel: +416 674-5942

Fax: + 416 674-8262

E-mail: tech@lavalink.com

Internet: www.lavalink.com



Lava Computer MFG Inc.



This device complies with part 15 of the FCC Rules. Operation is subject to the following conditions: (1) This device may not cause harmful interference, and (2) this device must accept any interference received, including interference that may cause undesired operation.

Lava Computer MFG Inc. 908 Niagara Falls Blvd. #629. North Tonawanda NY 14120-2060

