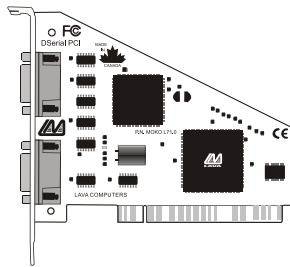


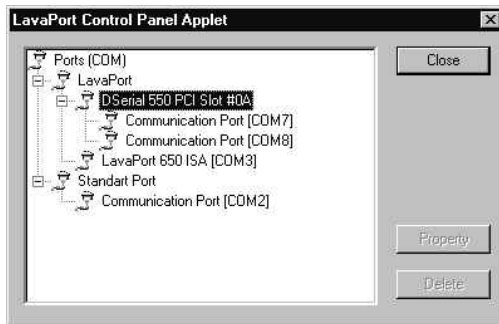
Lava DSerial-PCI 3.3 Volt Quick Installation Guide



Rev.B01

Windows NT 4.0 Installation

1. With the power turned off, insert the DSerial-PCI 3.3 Volt card into any free PCI slot in your PC. Boot NT logging on as "Administrator".
2. Place the installation diskette into your floppy drive and select Run from the Start Menu. When prompted type: A:\NT4.0\Setup.
3. After the necessary files have been copied, select My Computer and start Control Panel. A new icon will appear called "LavaPort". This applet should now be used to configure ALL Com Ports in your PC – not just Lava serial ports.



Please note that Com 1 may not appear in this applet if you have your mouse attached to Com 1.

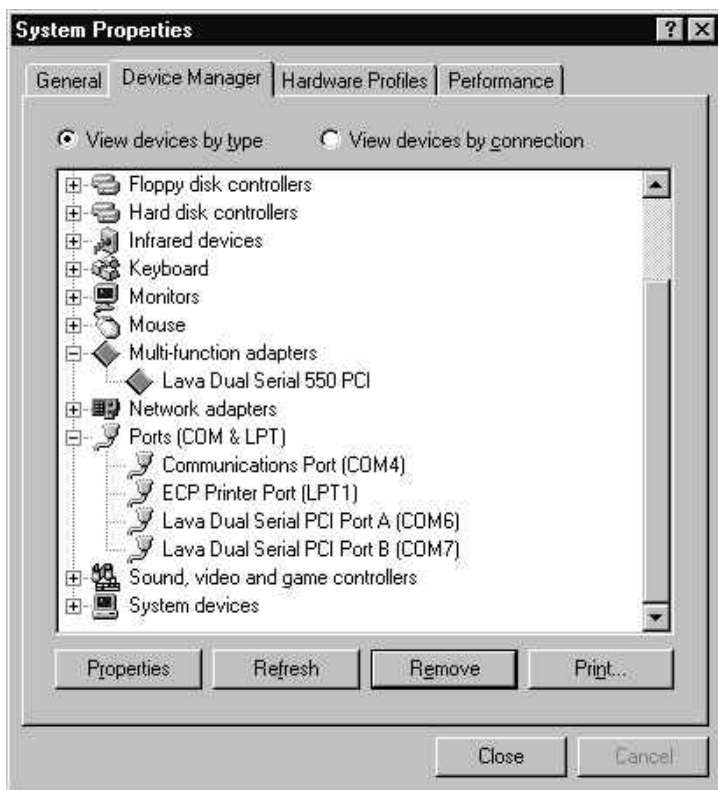
DOS and Windows 3.x Installation

1. With the power turned off, insert the DSerial-PCI 3.3 Volt card into any free PCI slot in your PC. Turn your PC on.
2. Place the installation diskette into your floppy drive. In the Win3.11\16550 subdirectory of this diskette you will find a file called "Lavaconf.exe". Copy this file to your hard drive and run it.
3. When run, Lavaconf.exe will display two I/O addresses and one IRQ. These correspond to the addresses and IRQ chosen by your PC when configuring the DSerial-PCI 3.3 Volt. Make a note of them.
4. If you are using Windows 3.x, start Windows and go to Control Panel | Ports. Choose Com 3 for Port 1 and Com 4 for Port 2 on the DSerial-PCI 3.3 Volt. Click the Advanced button and enter the I/O address and IRQ for each port as reported by Lavaconf.exe. Reboot your PC for these changes to take effect.

Note: DOS and Windows 3.X support a maximum of four Com Ports in a PC.

Windows 95/98/Me/2000/XP Installation

1. With the power turned off, insert the DSerial-PCI 3.3 Volt card into any free PCI slot in your PC. Make sure the card is well seated. Turn your PC on and start Windows.
2. Windows will automatically detect the DSerial-PCI 3.3 Volt as a new PCI Serial Controller and ask you to insert the Installation Diskette. The installation files are located in the root directory of this disk.
3. After the necessary files have been copied, Windows will complete the full installation of the DSerial-PCI 3.3 Volt. During this process, a DSerial-PCI 3.3 Volt Parent will be created in Device Manager under Multi-function adapters, and two child ports will be created in Device Manager under Ports. To view the installed configuration, click Control Panel | System. The DSerial-PCI 3.3 Volt will appear in the listing as follows:



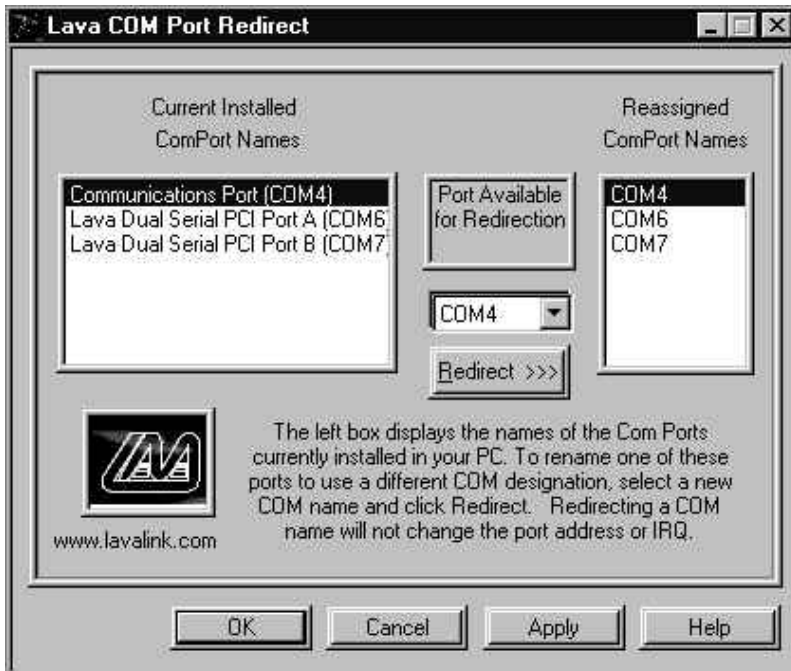
The DSerial-PCI 3.3 Volt hardware appears in Device Manager in two places: under the Multi-function adapters tree and as part of the Ports tree. Please note that any changes to the resources (I/O address and IRQ) used by either of the two ports on the DSerial-PCI 3.3 Volt must be made through the Resources page of the DSerial-PCI 3.3 Volt PARENT – not through the individual Ports pages.

NOTE: Modifying I/O Address and IRQ Resources is NOT recommended.

Changing the Com numbering of your ports in Windows 95/98/Me

Unless you already have more than 4 Com Ports installed in your PC, Windows will by default configure the DSerial-PCI 3.3 Volt as Com5 and Com6. If you wish to change the Com number of either one of the ports on the DSerial-PCI 3.3 Volt (e.g. Assign Port 1 to be Com 3), please use the Lava Com Port Redirect Utility included in the "Utils" subdirectory of your Installation Diskette. This may be necessary because some communications applications programs do not recognize port designations beyond Com 4. The Lava Com Port Redirect Utility will allow you to change the Com numbering of your ports without changing I/O address resources.

To install the Lava Com Port Redirect Utility on your hard drive, insert the Installation Diskette into your floppy drive, click Start, Run and type A:\Utils\Setup.



Changing the Com numbering of your ports in Windows 2000/XP

In Windows 2000 and Windows XP, Com port numbering can be changed by double-clicking the DSerial-PCI 3.3 Volt entry displayed in Windows' Device Manager (as described earlier). Go to Settings | Advanced, and choose the Com port number you want.

Lava Technical Support

9:00 am to 5:30 pm Monday to Friday (Eastern Time)

Tel: +416 674-5942

Fax: + 416 674-8262

E-mail: tech@lavalink.com

Internet: www.lavalink.com



Lava Computer MFG Inc.



This device complies with part 15 of the FCC Rules. Operation is subject to the following conditions: (1) This device may not cause harmful interference, and (2) this device must accept any interference received, including interference that may cause undesired operation.

Lava Computer MFG Inc. 908 Niagara Falls Blvd. #629. North Tonawanda NY 14120-2060

