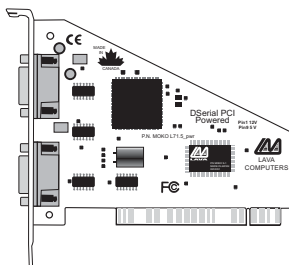


Lava DSerial-PCI Powered Quick Installation Guide

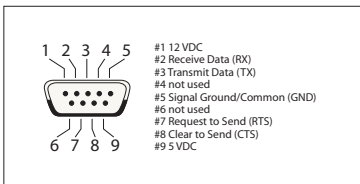


Rev. B01

NOTE: Hardware Design

The DSerial-PCI Powered has non-standard serial pin designations. It supplies 12 VDC to pin 1 on both ports, and 5 VDC to pin 9 on both ports. These pins are fused to allow a maximum amperage of 1.25 amps per port @ 20 degrees nominal temperature.

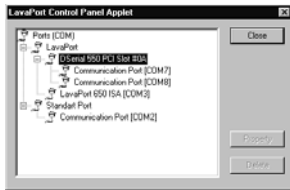
Not all serial port control lines are implemented on the DSerial-PCI Powered. Please refer to the pinout diagram to determine the suitability of the DSerial-PCI Powered for your needs.



NOTE: The DSerial-PCI Powered carries power on pins conventionally used as Data Carrier Detect (DCD) and Ring Indicator (RI). As these signals are inputs to the DTE device, care should be taken that DCE devices connected to the DSerial-PCI Powered do not supply problematic input voltages to the DTE device across these pins. If you are unsure of the suitability of connecting a specific peripheral to the DSerial-PCI Powered,, consult Lava Technical Support.

Windows NT 4.0 Installation

1. With the power turned off, insert the DSerial-PCI Powered card into any free PCI slot in your PC. Boot NT logging on as "Administrator". Place the DSerial-PCI Powered installation diskette into your floppy drive and select Run from the Start Menu. When prompted type:
A:\NT4.0\Setup.
2. After the necessary files have been copied, select My Computer and start Control Panel. A new icon will appear



called "LavaPort". This applet should now be used to configure ALL Com Ports in your PC – not just Lava serial ports. Please note that Com 1 may not appear in this applet if you have your mouse attached to Com 1.

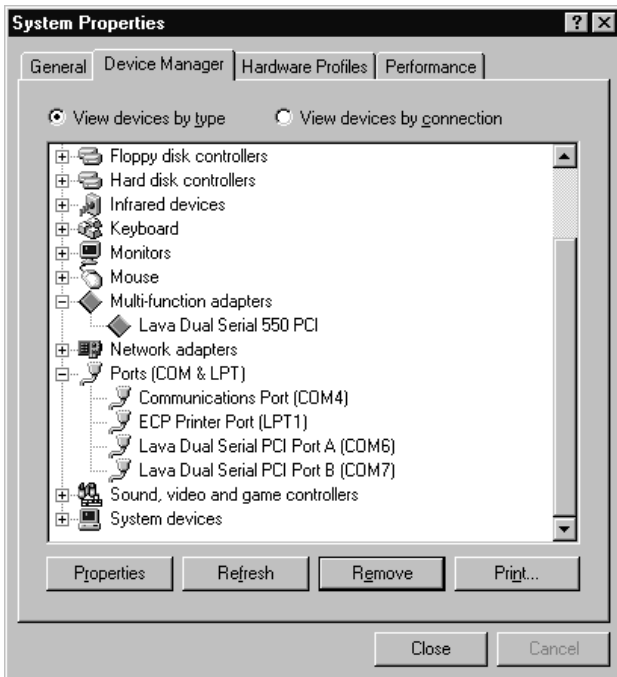
DOS and Windows 3.x Installation

1. With the power turned off, insert the DSerial-PCI Powered card into any free PCI slot in your PC. Turn your PC on.
2. Place the DSerial-PCI Powered installation diskette into your floppy drive. In the Win3.11\16550 subdirectory of this diskette you will find a file called "Lavaconf.exe". Copy this file to your hard drive and run it.
3. When run, Lavaconf.exe will display two I/O addresses and one IRQ. These correspond to the addresses and IRQ chosen by your PC when configuring the DSerial-PCI Powered. Make a note of them.
4. If you are using Windows 3.x, start Windows and go to Control Panel | Ports. Choose Com 3 for Port 1 and Com 4 for Port 2 on the DSerial-PCI Powered. Click the Advanced button and enter the I/O address and IRQ for each port as reported by Lavaconf.exe. Reboot your PC for these changes to take effect.

Note: DOS & Windows 3.X support a maximum of four Com Ports in a PC.

Windows 95/98/Me/2000/XP Installation

1. With the power turned off, insert the DSerial-PCI Powered card into any free PCI slot in your PC. Make sure the card is well seated. Turn your PC on and start Windows.
2. Windows will automatically detect the DSerial-PCI Powered as a new PCI Serial Controller and ask you to insert the Installation Diskette. The installation files are located in the root directory of this disk.
3. After the necessary files have been copied, Windows will complete the full installation of the DSerial-PCI Powered. During this process, a Parent device will be created in Device Manager under Multi-function adapters, and two Child ports will be created in Device Manager under Ports. To view the installed configuration, click Control Panel | System. The DSerial-PCI Powered will appear in the listing as follows:



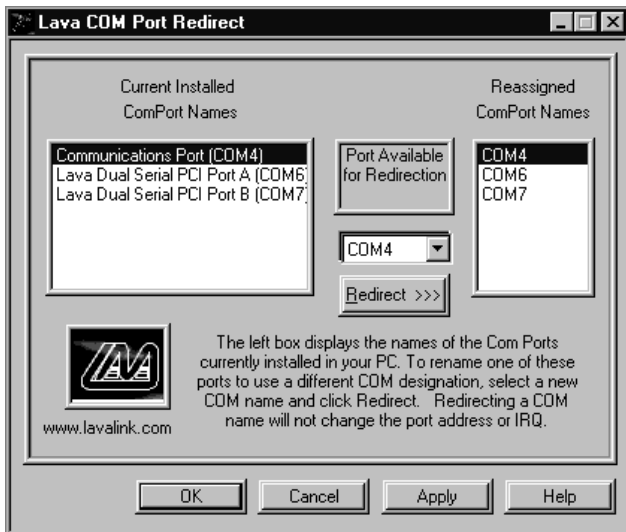
The DSerial-PCI Powered hardware appears in Device Manager in two places: under the Multi-function adapters tree and as part of the Ports tree. Please note that any changes to the resources (I/O address and IRQ) used by either of the two ports on the DSerial-PCI Powered must be made through the Resources page of the DSerial-PCI Powered PARENT – not through the individual Ports pages.

NOTE: Modifying I/O Address and IRQ Resources is NOT recommended.

Changing the Com numbering of your ports **in Windows 95/98/Me**

Unless you already have more than 4 Com Ports installed in your PC, Windows will by default configure the DSerial-PCI Powered as Com5 and Com6. If you wish to change the Com number of either one of the ports on the DSerial-PCI Powered (e.g. Assign Port 1 to be Com 3), please use the Lava Com Port Redirect Utility included in the "Utils" subdirectory of your Installation Diskette. This may be necessary because some communications applications programs do not recognize port designations beyond Com 4. The Lava Com Port Redirect Utility will allow you to change the Com numbering of your ports without changing I/O address resources.

To install the Lava Com Port Redirect Utility on your hard drive, insert the Installation Diskette into your floppy drive, click Start, Run and type A:\Utils\Setup.



Changing the Com numbering of your ports in Windows 2000/XP

In Windows 2000 and Windows XP, Com port numbering can be changed by double-clicking the DSerial-PCI Powered entry displayed in Windows' Device Manager (as described earlier). Go to Settings | Advanced, and choose the Com port number you want.

Lava Technical Support

9:00 am to 5:30 pm Monday to Friday (Eastern Time)

Tel: +416 674-5942

Fax: + 416 674-8262

E-mail: tech@lavalink.com

Internet: www.lavalink.com



Lava Computer MFG Inc.



This device complies with part 15 of the FCC Rules. Operation is subject to the following conditions: (1) This device may not cause harmful interference, and (2) this device must accept any interference received, including interference that may cause undesired operation.

Lava Computer MFG Inc. 908 Niagara Falls Blvd. #629. North Tonawanda NY 14120-2060

