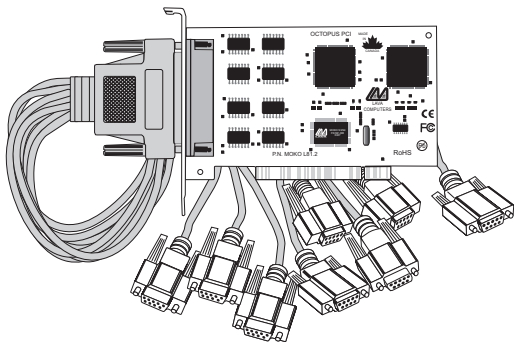


LAVA Octopus-550 Installation Manual

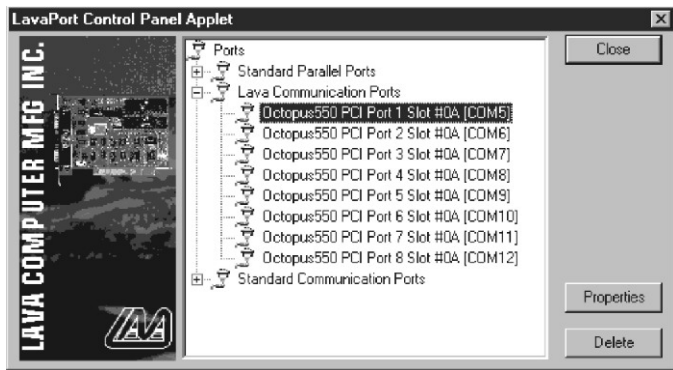


Rev. C00

1

Windows NT 4.0 Installation

1. With the power turned off, insert the Octopus-550 card into any free PCI slot in your PC. Boot NT logging on as "Administrator".
2. Place the Octopus-550 Installation CD into your computer and select Run from the Start Menu. When prompted type:
A:\NT4.0\Setup.
3. After the necessary files have been copied, select My Computer and start Control Panel. A new icon will appear called "LavaPort." This applet should now be used to configure ALL Com Ports in your PC – not just LAVA serial ports.



Please note that Com 1 may not appear in this applet if you have your mouse attached to Com 1.

2

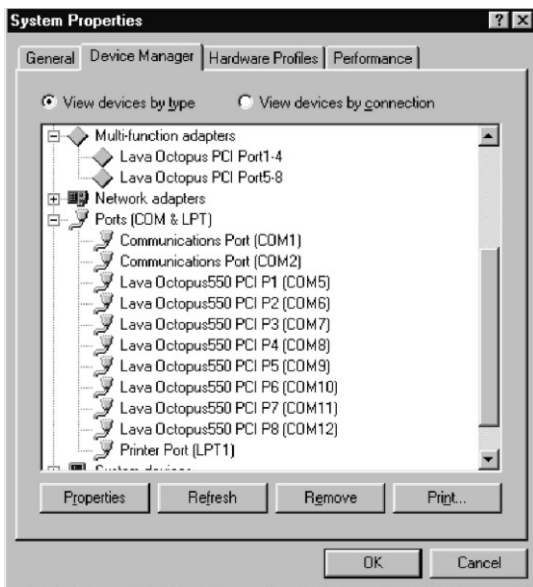
DOS & Windows 3.x Installation

1. With the power turned off, insert the Octopus-550 card into any free PCI slot in your PC. Turn your PC on. Boot to DOS.
2. Place the Octopus-550 installation CD into your computer. In the Win3.11 subdirectory of this CD you will find a file called "Lavaconf.exe". Copy this file to your hard drive and run it.
3. When run, Lavaconf.exe will display two sets of four I/O addresses and one IRQ. These correspond to the addresses and IRQ chosen by your PC when configuring the Octopus-550. Make a note of them.
4. If you are using Windows 3.x, start Windows and go to Control Panel | Ports. Choose Com 3 for Port 1 and Com 4 for Port 2 on the Octopus-550. Click the Advanced button and enter the I/O address and IRQ for each port as reported by Lavaconf.exe. Reboot your PC for these changes to take effect.

Note: Native DOS and Windows 3.X support a maximum of four Com ports in a PC. If you wish to use four ports on the Octopus-550, you must disable the existing ports on your motherboard. Users running DOS or Windows 3.x exclusively on a system with an Octopus-550 will be unable to access four of the card's ports, regardless of configuration.

Windows 95/98/Me/2000/ Vista/Win 7 Installation

1. With the power turned off, insert the Octopus-550 card into any free PCI slot in your PC. Make sure the card is well seated. Attach the cable. Turn your PC on and start Windows.
2. Windows will automatically detect the Octopus-550 as a new PCI Serial Controller and ask you to insert the Installation CD. The installation files are located in the root directory of this CD. Windows XP/Vista/7 may display a message to the effect that the drivers are not digitally signed. This warning can be ignored.
3. After the necessary files have been copied, Windows will complete the full installation of the Octopus-550. During this process, two Octopus-550 parents will be created in Device Manager under Multi-Function Adapters, and eight child ports will be created under Control Panel | System | Device Manager | Ports.



The Octopus-550 hardware appears in Device Manager in two places: under the Multi-function Adapters tree and as part of the Ports tree. Please note that any changes to the Resources (I/O Address & IRQ) used by any one of the eight ports on the Octopus-550 must be made through the Resources page of the appropriate Octopus-550 PARENT – not through the individual Ports pages.

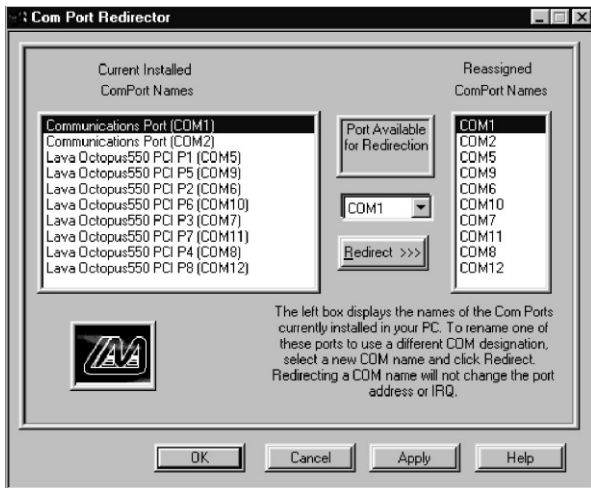
Modifying I/O Address and IRQ Resources is NOT recommended.

5

Changing the Com numbering of your Octopus-550 ports (Windows 95/98/Me only)

Unless you already have more than 4 Com ports installed in your PC, Windows will by default configure the Octopus-550 ports as Com 5 through Com 12. To change the Com number of any of these ports (e.g. reassign Com 5 to be Com 3), please use the Lava Com Port Redirect Utility included in the "Utils\Redirect" subdirectory of your Installation CD. Such a reassignment may be necessary because some communications applications programs do not recognize port designations beyond Com 4. The Com Port Redirect utility will allow you to change the Com numbering of your ports **without changing I/O address resources**.

To install the Port Redirect Utility on your hard drive, insert the Installation CD into your computer, click Start, Run and type A:\Utils\Redirect\Setup.



Changing the Com numbering of your Octopus-550 ports (Windows 2000/XP/Vista/Win 7 only)

In Windows 2000 and later, Com port numbering can be changed by double-clicking the serial port entry displayed in Windows' Device Manager. Go to Port Settings | Advanced, and choose Com Port #.

LAVA Technical Support

9:00 am to 5:30 pm Monday to Friday (Eastern Time)

Tel: +416 674-5942

Fax: + 416 674-8262

E-mail: tech@lavalink.com

Internet: www.lavalink.com



LAVA Computer MFG Inc.



This device complies with part 15 of the FCC Rules. Operation is subject to the following conditions: (1) This device may not cause harmful interference, and (2) this device must accept any interference received, including interference that may cause undesired operation.

