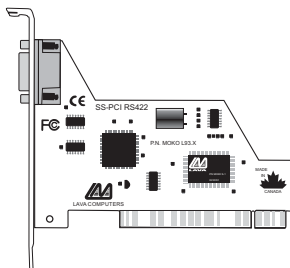


Lava RS422 SS-PCI Installation Manual



Rev. B02

Windows Installation

1. With the power turned off, insert the RS422 SS-PCI card into any free PCI slot in your PC. Make sure the card is well seated. Turn your PC on and start Windows.
2. Windows will automatically detect the RS422 SS-PCI as a new PCI Serial Controller and ask you to insert the Installation Diskette. The installation files are located in the root directory of this disk.
3. After the necessary files have been copied, Windows will automatically complete the installation of the RS422 SS-PCI by assigning it a Com number and IRQ. During this process, a Lava SS-RS422 PCI entry will be created in Device Manager.

To view this configuration in Windows 95/98/Me, click Start | Settings | Control Panel | System | Device Manager | Ports.

To view this configuration in Windows 2000/XP, click Start | Settings | Control Panel | System, then choose the Hardware tab and click on Device Manager. Choose the Devices by Type view option "Ports".

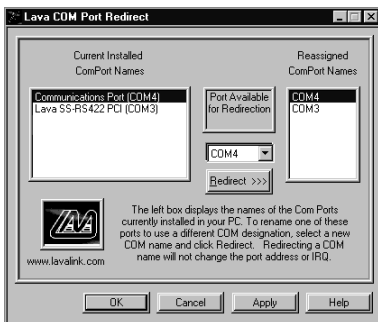
Modifying I/O Address and IRQ Resources in Device Manager is NOT recommended.

Changing the Com numbering of your RS422 SS-PCI port (Windows 95/98/Me only)

Unless you already have more than 4 Com Ports installed in your PC, Windows will by default configure the RS422 SS-PCI as Com 5. If you wish to change this assigned Com number (e.g. reassign Com 5 to be Com 3), please use the Lava Com Port Redirect Utility included in the "Utils\Redirect" subdirectory of your Installation Diskette. Such a reassignment may be necessary because some communications

applications programs do not recognize port designations beyond Com 4. The Com Port Redirect utility will allow you to change the Com numbering of your ports without changing I/O address resources.

To install the Port Redirect Utility on your hard drive, insert the Installation Diskette into your floppy drive, click Start, Run and type A:\Utils\Redirect\Setup.

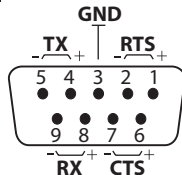


Changing the Com numbering of your RS422 SS-PCI port (Windows 2000/XP only)

In Windows 2000, Com port numbering can be changed by double-clicking the SS-RS422 PCI entry displayed in Windows' Device Manager (as described earlier). Go to Settings | Advanced, and choose Com Port #.

Connector Details

The pins of the DB-9 connectors on the RS422 SS-PCI serial board are illustrated on the right.



Lava Technical Support

9:00 am to 5:30 pm Monday to Friday (Eastern Time)

Tel: +416 674-5942

Fax: + 416 674-8262

E-mail: tech@lavalink.com

Internet: www.lavalink.com



Lava Computer MFG Inc.



This device complies with part 15 of the FCC Rules. Operation is subject to the following conditions: (1) This device may not cause harmful interference, and (2) this device must accept any interference received, including interference that may cause undesired operation.

Lava Computer MFG Inc. 908 Niagara Falls Blvd. #629. North Tonawanda NY 14120-2060

