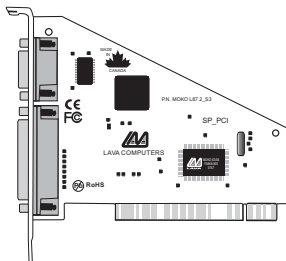


LAVA SP-PCI

Installation Manual

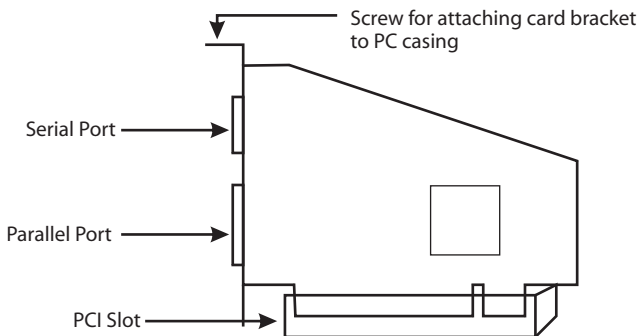


Rev. B02

1

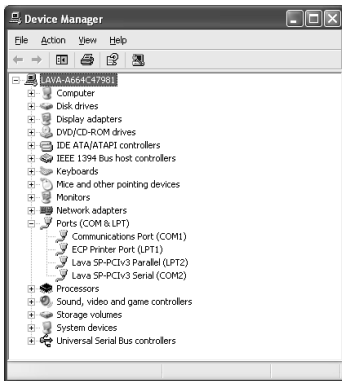
Windows Hardware and Driver Installation

1. Before opening the casing of your computer, make sure that all power is off.
2. Locate an unused PCI slot and insert the SP-PCI card into it. Ensure that the card is well seated.
3. Screw the metal bracket of the SP-PCI card to your PC's casing and replace the machine's cover.
4. Turn the PC on.
5. When Windows starts, it will find an SP-PCI Controller and will ask you for a driver for this device. When prompted, insert the Installation CD into your computer. After copying the necessary files from the CD, Windows may restart your PC in



order to complete the installation of the SP-PCI card. Any Plug and Play devices attached to the SP-PCI will now also be detected and installed. Windows may display a message to the effect that the drivers are not digitally signed. This warning can be ignored.

- To view how Windows has installed the SP-PCI, open Windows' Device Manager. Please note that the SP-PCI will appear in Device Manager under two separate entries. The serial port will appear both under the Multifunction Adapters tree and under the Ports tree, while the Parallel port will appear under Ports only (see example below). Please use the appropriate listings if you wish to customize any of the SP-PCI card's settings. Please note that changes to default settings may be required by users connecting the SP-PCI card to a non-printer peripheral. Users connecting a printer should use default settings.



3 Connecting a non-printer device **(e.g. external drive or parallel scanner)** **to the SP-PCI's parallel port**

In Windows 95/98/ME (not Windows 2000/XP/Vista/7) some parallel port devices require parallel ports that use standard (legacy) ISA LPT addresses (0278h or 0378h). Because the SP-PCI card is a fully compliant PCI device, its default address (Input/Output Range) is beyond the standard range of ISA I/O addresses. In order to connect such a peripheral to the SP-PCI card, the I/O address range of the card must therefore be changed manually. This section describes how this is done.

1. Open Control Panel\System|Device Manager and find the SP-PCI's parallel port listing under Ports. Click Properties, and proceed to the Resources tab.
2. Remove the check mark from the Use Automatic Settings box.

Note: In some cases Windows will give an error message to the effect that "Windows cannot modify this resource" at this point. If you are unable to access the settings for changing system resources, reboot the system in Safe Mode to make changes to resource settings. (To enter Safe Mode, press the F8 key while the system is rebooting.)

3. Double-click on the words Input/Output Range. A screen displaying I/O ranges will appear.
4. Use the up/down arrows to scroll to one of the following range settings, or type them in manually:

0278 – 027F

0378 – 037F

0338 – 033F

0238 – 023F

02B8 – 02BF

5. After one of these has been entered, click OK. Windows will verify whether you would like to force this particular configuration rather than the automatic one that it had previously chosen. Click Yes.
6. Verify that there are no conflicts with addresses being used by other devices already in your PC. If no conflicts are found, restart Windows.

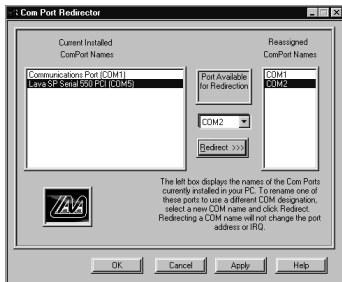
Changing the Com numbering of your SP-PCI port (Windows 95/98/Me only)

Unless you already have more than 4 Com Ports installed in your PC, Windows will by default configure the SP-PCI as Com 5. If you wish to change this assigned Com number (e.g. reassign Com 5 to be Com 3), please use the LAVA Com Port Redirect Utility included in the "Utils\Redirect" subdirectory of your Installation CD. Such a reassignment may be necessary because some communications applications programs do not recognize port designations beyond Com 4. The Com Port Redirect utility will allow you to change the Com numbering of your ports **without changing I/O address resources**.

To install the Port Redirect Utility on your hard drive, insert the Installation CD, click Start, Run and type [drive letter]:\Utils\Redirect\Setup.

Changing the Com numbering of your SP-PCI port (Windows 2000/XP/VISTA/7 only)

In Windows 2000/XP/Vista/7, Com port numbering can be changed by double-clicking the serial port entry displayed in Windows' Device Manager (as described earlier). Go to Port Settings | Advanced, and choose Com Port #.



6 Using Zip Drives with the SP-PCI

NOTE: The default input/output range for the SP-PCI card works with Zip™ drives using new lomegaware™ software. The instructions "Connecting a non-printer device" given above apply to Zip™ drive users using old versions of lomegaware™. For best results with Windows 2000/XP/Vista/7, we recommend downloading the latest "lomegaware" from lomega. Additional instructions on optimizing Zip drive performance with the SP-PCI can be found at www.lavalink.com.

Release Notes:

- A. This documentation describes installing the SP-PCI on a Windows 95/98/Me/2000/XP/Vista/7 PC. Instructions and software for DOS, Windows 3.x, and Windows NT 4.0 may be found in the NT4.0 subdirectory of the SP-PCI card Installation CD. Instructions for Linux installation are available at www.lavalink.com.
- B. Because the SP-PCI card uses PCI (not ISA) I/O address ranges, it will never be seen by your BIOS at boot-up as a standard port even if the address has been changed in Windows using the above procedure. This is normal, and does not indicate a fault in your SP-PCI card.
- C. The parallel port of the SP-PCI card will not work at address 0278h or 0378h if it is installed in a PCI slot that is behind a PCI-to-PCI bridge. If you have trouble installing the SP-PCI card, try seating it in a different slot.
- D. In standard installations of Windows 2000/XP/Vista/7, the I/O address cannot be changed to a legacy address.
- E. Some devices (like external CD writers) default to "word mode" (ie: 16-bit data transfer) for fastest performance. Such devices need to operate in "byte mode" (8-bit data transfer) to work with the SP-PCI. Look in your device software for a "byte mode" setting, and enable it.

LAVA Technical Support

9:00 am to 5:30 pm Monday to Friday (Eastern Time)

Tel: +416 674-5942
Fax: + 416 674-8262

E-mail: tech@lavalink.com
Internet: www.lavalink.com



LAVA Computer MFG Inc.



This device complies with part 15 of the FCC Rules. Operation is subject to the following conditions: (1) This device may not cause harmful interference, and (2) this device must accept any interference received, including interference that may cause undesired operation.

