



Product Guide



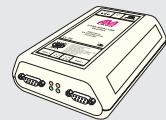
Tel: +416.674.5942
www.lavalink.com
sales@lavalink.com

Serial Device Servers – Simply network-enable any RS-232 serial device

LAVA Ether-Serial Links extend serial connections anywhere. Access and control serial ports across a LAN, WAN, or the Internet.

- ESL 1-232-DB9
- ESL 1-232-RJ45
- ESL 2-232-DB9
- ESL 4-232-DB9
- ESL 4-232-RJ45
- ESL 4-232-DB9-CBL
- ESL 8-232-DB9-CBL
- ESL 8-232-RJ45
- ESL 16-232-DB9-CBL

- Ether-Serial Link single RS-232 IP-enabled 9-pin serial port
- Ether-Serial Link single RS-232 IP-enabled 10-pin RJ-45 serial port, power on pin 10
- Ether-Serial Link dual RS-232 IP-enabled 9-pin serial ports
- Ether-Serial Link four RS-232 IP-enabled 9-pin serial ports
- Ether-Serial Link four RS-232 IP-enabled 10-pin RJ-45 serial ports, power on pin 10
- Ether-Serial Link four RS-232 IP-enabled 9-pin serial ports, fanout cable
- Ether-Serial Link eight RS-232 IP-enabled 9-pin serial ports, fanout cables
- Ether-Serial Link eight RS-232 IP-enabled 10-pin RJ-45 serial ports, power on pin 10
- Ether-Serial Link sixteen RS-232 IP enabled 9-pin serial ports, fanout cables



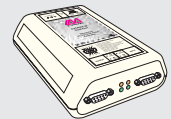
Ether-Serial Link
2-DB9-232

DataTap-IP – IP-enable POS stations for text overlay on surveillance video

LAVA DataTap-IP sends receipt printer transaction data to DVRs for POS surveillance video text overlay.

DataTap-IP 2-DB9-232

Dual RS-232 IP-enabled 9-pin ports w. serial-to-serial and serial-to-Ethernet pass-through



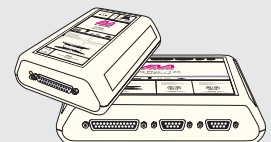
DataTap-IP

HQ-ST Link – Remotely poll serial-based cash registers, without a modem

IP-enables serial-based Electronic Cash Registers, enabling remote polling from a head office.

- HQ Plus-8
- HQ Plus-30
- HQ Plus-126
- HQ Remote Poller
- HQ Remote Console
- ST Plus Unit

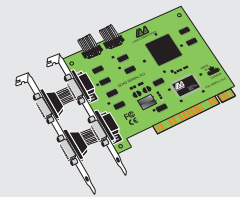
- RS-232 serial-to-IP connection to ST units, 1-DB9F-232 & 1-DB9M-232
- RS-232 serial-to-IP connection to ST units, 1-DB9F-232 & 1-DB9M-232
- RS-232 serial-to-IP connection to ST units, 1-DB9F-232 & 1-DB9M-232
- Remote substitute hardware for head office HQ Plus polling interface
- Remote substitute hardware for head office HQ Plus management interface
- RS-232 serial-to-IP connection to HQ unit, 1-DB25F-232



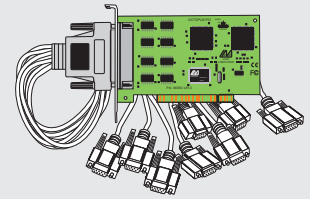
HQ-ST Link:
HQ Plus & ST Plus

Serial, Parallel, and Combo PCI cards

SSerial-PCI	Single 9-pin serial, 16550 UART
SSerial-PCI/LP	Single 25-pin serial, 16550 UART, low profile
RS422 SS-PCI	Single 9-pin serial, 16550 UART, RS-422 pinout
DSerial-PCI	Dual 9-pin serial, 16550 UARTs
DSerial-PCI Powered	Dual 9-pin serial, 16550 UARTs, 5 & 12 VDC powered serial ports
DSerial-PCI 3.3V	Dual 9-pin serial, 16550 UARTs, for 3.3 volt PCI
DSerial-PCI/LP	Dual 9-pin serial, 16550 UARTs, low profile w. dual fanout cable
LavaPort-PCI	Dual 9-pin serial, 16650 UARTs, 460.8 kbps capable
Quattro-PCI	Four-port 9-pin serial, 16550 UARTs
Quattro-PCI Powered	Four-port 9-pin serial, 16550 UARTs, 5 & 12 VDC powered serial ports
Quattro-PCI 3.3V	Four-port 9-pin serial, 16550 UARTs, for 3.3 volt
Quattro-PCI/LP	Four-port 9-pin serial, 16550 UARTs, low profile w. quad fanout cable
LavaPort-Quad	Four-port 9-pin serial, 16650 UARTs, 460.8 kbps capable
Octopus-550	Eight-port 9-pin serial, 16550 UARTs w. octopus fanout cable
Parallel-PCI	Single EPP parallel
Parallel-PCI 3.3V	Single EPP parallel, for 3.3 volt
Parallel-PCI/LP	Single EPP parallel, low profile
Dual Parallel-PCI	Dual EPP parallel
SP-PCI	Single 9-pin serial, 16550 UART + single bidirectional parallel
2SP-PCI	Dual serial (9 & 25-pin), 16550 UARTs + single EPP parallel



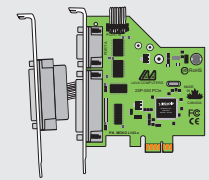
Quattro-PCI



Octopus-550

Serial, Parallel, and Combo PCIe cards

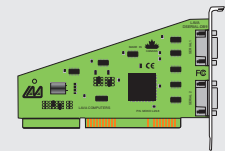
SSerial-PCIe	Single 25-pin serial, 16550 UART
SSerial-PCIe/LP	Single 25-pin serial, 16550 UART, low profile
DSerial-PCIe	Dual 9-pin serial, 16550 UARTs
DSerial-PCIe/LP	Dual 9-pin serial, 16550 UARTs, low profile w. dual fanout cable
Quattro-PCIe	Four-port 9-pin serial, 16550 UARTs
Parallel-PCIe	Single EPP parallel
Parallel-PCIe/LP	Single EPP parallel, low profile
SP-PCIe	Single 9-pin serial, 16550 UART + single bidirectional parallel
2SP-PCIe DB9	Dual serial (9 & 9-pin), 16550 UARTs + single EPP parallel
2SP-PCIe DB25	Dual serial (9 & 25-pin), 16550 UARTs + single EPP parallel



2SP-PCIe

Serial, Parallel, and Combo ISA cards

SSerial-550	Single 25-pin serial, Com 1-4, 16550 UART, IRQ 3/4/5/7
LavaPort-ISA	Single 9-pin serial, Com 1-4, 16650 UART, IRQ 2/3/4/5/10/11/12/15, 460.8 kbps capable
LavaPort-PnP	Single 9-pin serial, 16650 UART, Plug & Play configuration, 460.8 kbps capable
DSerial-550	Dual 9-pin serial, Com 1-4, 16550 UARTs, IRQ 2/3/4/5/7/10/11/12/15
RS422-550	Dual 9-pin serial, 16550 UARTs, RS-422 pinouts
Par. Bi-directional	Single bi-directional parallel port, LPT 1/2/3, IRQ 5/7
2SP-550	Dual 9-pin serial, Com 1-4, 16550 UARTs + single bi-directional parallel, LPT 1-2

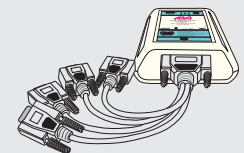


DSerial-550

USB-Serial Links

Adds RS-232 DB9 serial ports to systems with USB 1.1 or USB 2.0 connectors.

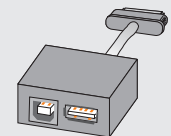
USB-Serial Link 2-232-DB9	Dual RS-232 ports on USB 1.1/2.0
USB-Serial Link 4-232-DB9	Four RS-232 ports on USB 1.1/2.0
USB-Serial Link 4-232-DB9 Cabled	Four RS-232 ports on USB 1.1/2.0, quad fanout cable



USB-Serial 4-232-DB9 Cabled

USB-Host Mode & Power Adapter for Samsung Galaxy Tab 2

Operate tablet in USB host mode while also simultaneously charging/powering.



USB-Host Mode & Power Adapter

Serial Port Splitter

Arbitrates between two serial data streams feeding into one serial port.

Serial Splitter 2-RJ45-232	Dual RS-232 inputs to one RS-232 output; RJ-45 connections, power supply included
----------------------------	---



Serial Port Splitter

Buy LAVA products direct: call 1-800-241-LAVA (5282). Shop online at <http://lavalink.com>

About LAVA

LAVA Computer MFG Inc. Headquartered in Toronto, Canada, LAVA designs and manufactures serial and parallel I/O boards, Ethernet-to-serial device servers and links, and USB-to-serial links that are widely used in the Point of Sale, Kiosk, Gaming, Industrial Automation, Hospitality, Security and Access Control industries. With well over a million LAVA products built into workstations, servers, retail POS systems, and industrial computers since 1984, LAVA I/O boards and Ether-Serial Links are trusted by resellers, distributors, OEMs and system builders in over 47 countries worldwide. Designed for lifetime performance, each LAVA connectivity link is individually tested and covered by the LAVA Lifetime Warranty. **LAVA: The Source for Ports.**