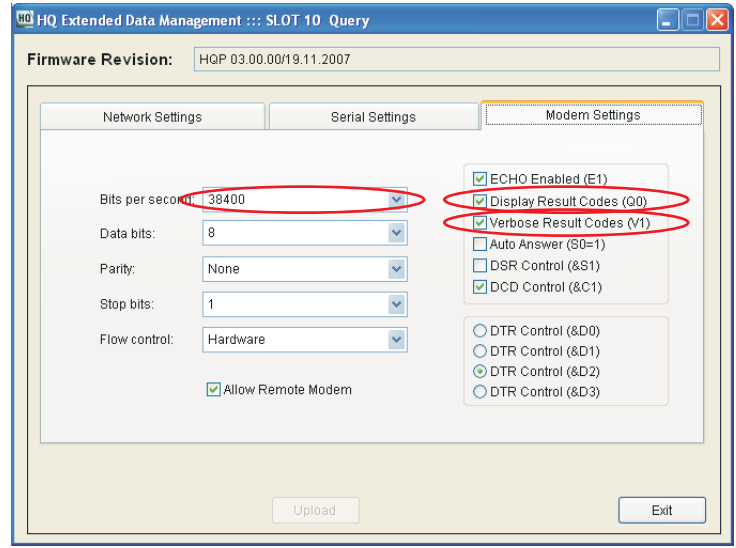


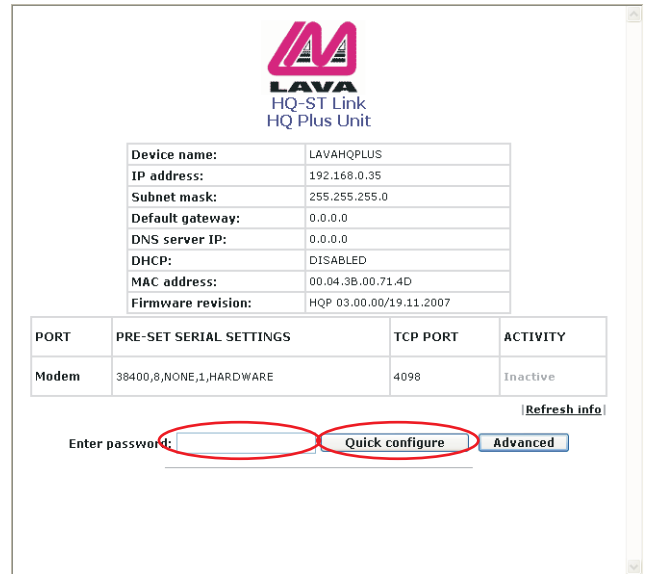
Setting Up the LAVA HQ-ST Link for Sam4s SPS2000 Polling

The HQ-ST Link should have 1) Display Result Codes enabled, and 2) Verbose Result Codes enabled. By default, the HQ-ST Link is configured with these settings.

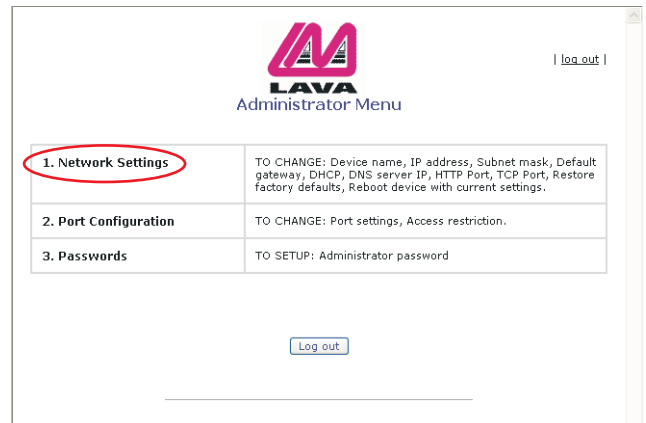
Also, set the speed of the HQ Plus modem port to one that corresponds to the "Maximum Port Speed" setting shown on page 5 of these setup instructions.



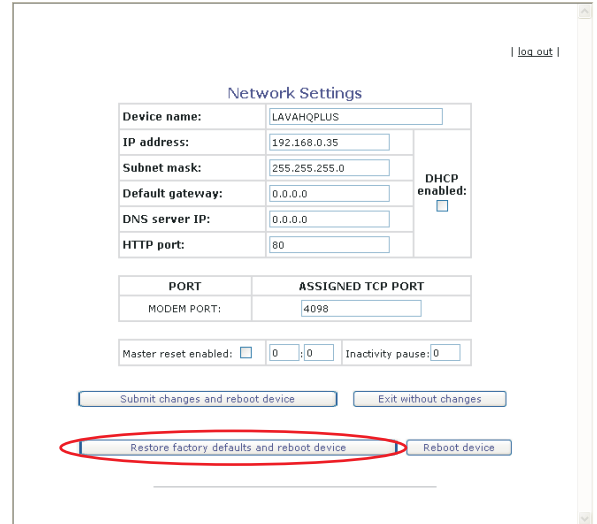
To restore the unit to factory defaults, first open a web browser to the IP address of the HQ Plus device (by default 192.168.0.35). Enter a password and click "Quick Configure."



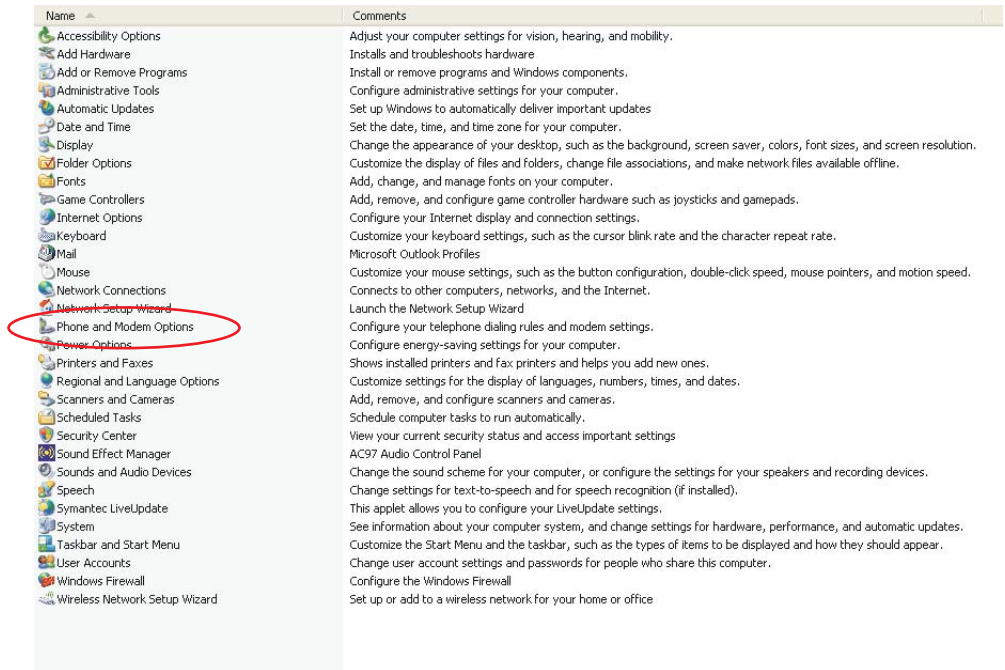
Choose "Network Settings" from the menu that appears on the Administrator Menu screen.



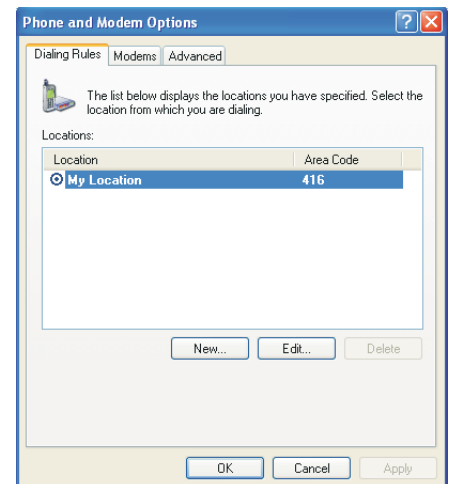
Choose "Restore factory defaults and reboot device."



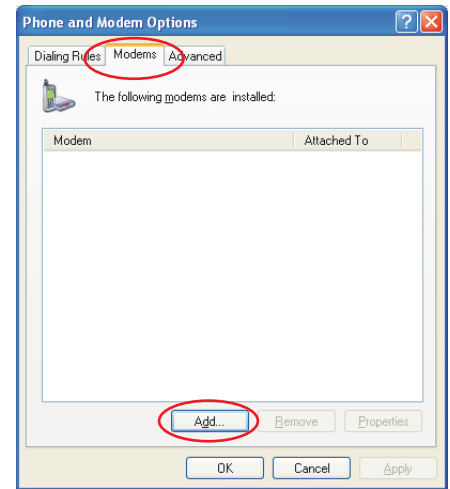
Configure a Windows modem. First, open Window's control panel, and choose "Phone and Modem Options."



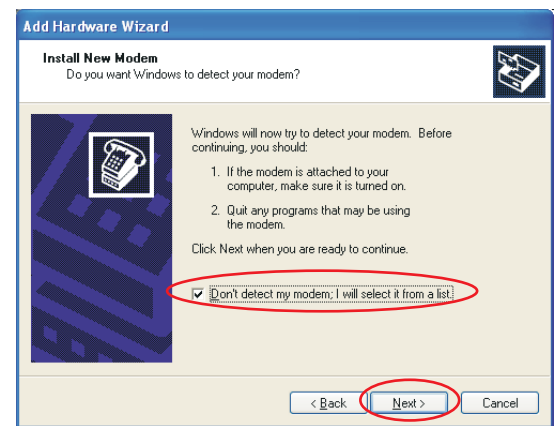
The modem configuration screen opens.



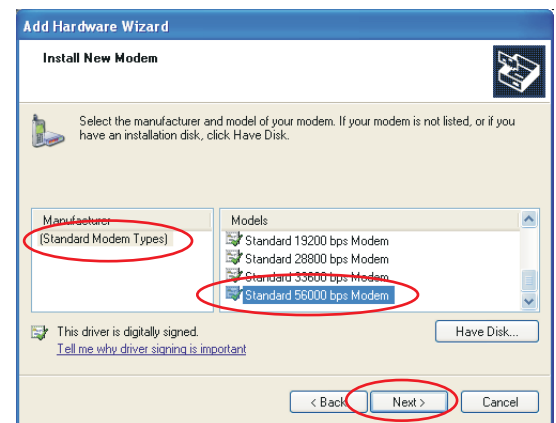
Choose the "Modems" tab and click "Add."



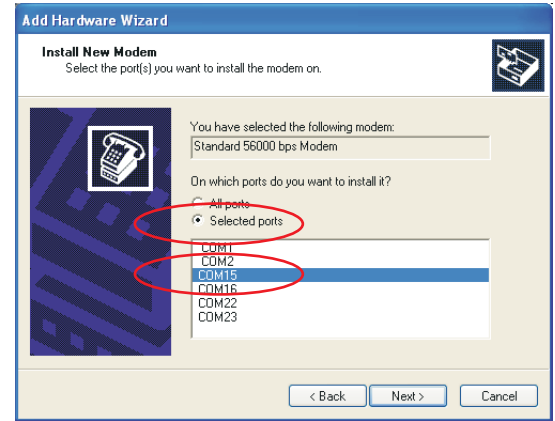
The "Install New Modem" wizard opens. Check the "Don't detect" option and then click "Next."



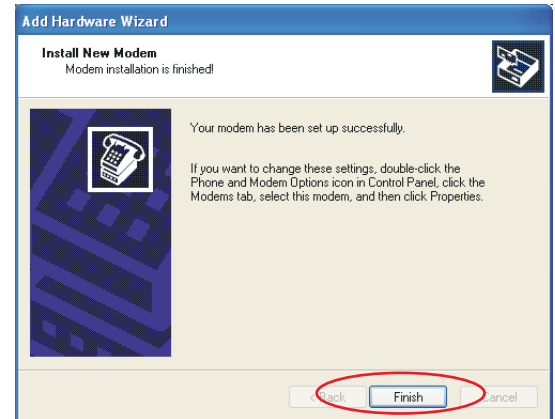
Choose a standard modem as the type, and select a speed that will accommodate the speed of your cash register's serial port, then click "Next."



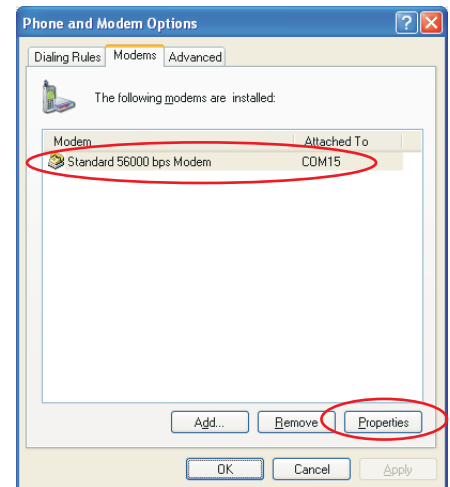
Select a serial port that matches the one used by the HQ Plus, and then click "Next."



When you have finished, click "Finish."

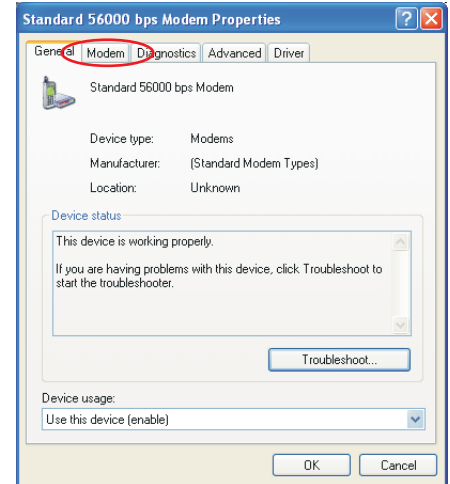


Your newly-installed modem will appear in the modem list. Configure the modem by selecting "Properties."

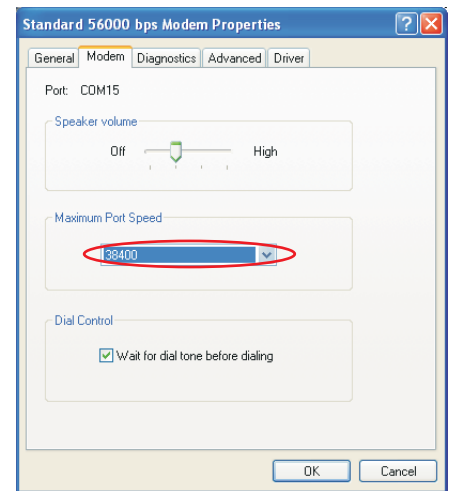


The modem's properties are visible in the "Modem Properties" dialog boxes.

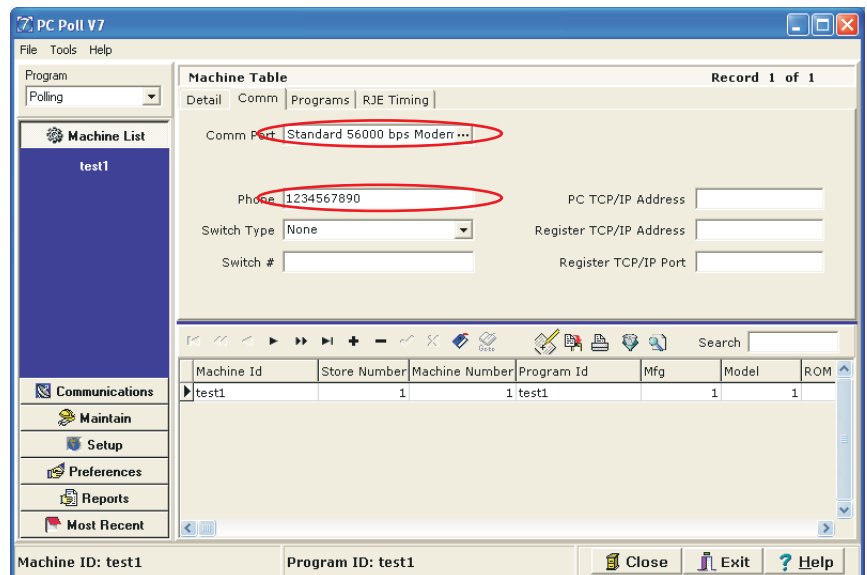
Select the "Modem" tab to configure the Window's modem properties.



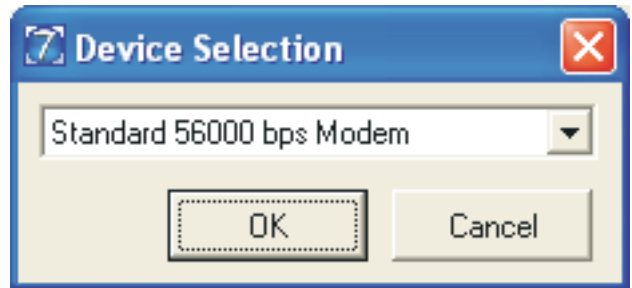
Set the "Maximum Port Speed" of the Window's modem to match the actual speed of the modem port of the HQ Plus, as set in the "Bits per second" entry box shown on page 1 of these setup instructions.



In PC-Poll, select the modem you have configured, and supply the "phone number" of the store to be polled.



Configure HQ-Basic to the port and modem you have defined.



HQ-Basic will direct polls initiated by PC-Poll to the correct IP address for the correct store's ST Plus device, based on the "phone number" you have supplied to PC-Poll. This same phone number will have been entered into the ST Plus device's configuration screens, to be supplied by the ST Plus to the HQ Plus when the store connects to the headquarters.

