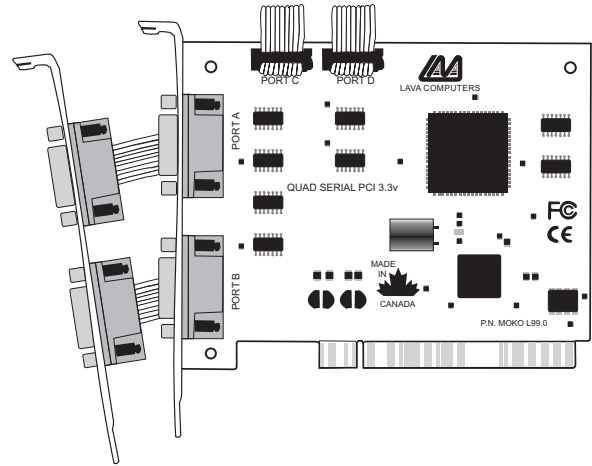




LAVA

QUATTRO-PCI 3.3V

**PCI Bus
4-Port
Serial Board
with
16550 UARTs
for 3.3 Volt PCI**



Features:

- *Four 9-pin high speed 16550 UART serial ports —adds four COM ports to any 3.3 volt PCI-equipped PC. Maximum data throughput rate: 115.2 kbps on each port.*
- *Requires only one system IRQ —saves valuable resources for other expansion cards.*
- *Both ports share one PCI bus IRQ —even when accessed simultaneously.*
- *Automatically selects next available IRQ and COM addresses —just plug it in and go!*
- *Includes Lava Com Port Redirect Utility for renaming COM Ports —allows for backward compatibility with software that supports COM 1-4 only.*
- *Compatible with RS-232 serial peripherals —including modems, PDAs, digital cameras, bar-code scanners, and UPSes.*
- *Compliant with PCI Specification 3.0*
- *Lava Lifetime Warranty*

Lava: "The Source For Ports"



LAVA COMPUTER MFG INC.
2 VULCAN STREET, TORONTO, ON CANADA M9W 1L2

TEL: (416) 674-5942
FAX: (416) 674-8262



www.lavalink.com

Rev. B00